



TECHNICAL BULLETIN 005

11/08/2005

FORD 2.5 D, 2.5 TD / SYNCHRONOUS DRIVE / INSTALLATION RECOMMENDATION

EXPLANATION:

These kits contain an automatic tensioner and its specific bolt, which can be installed in replacement as well for the used manual as for the used automatic tensioner.

Although some sources list the manual tensioner for the Turbo Diesel version, Ford workshops install the new kit (with automatic tensioner) on both Diesel as well as on Turbo Diesel engines.

Please note that belts 5571XS and 5572XS should only be used in combination with the automatic tensioner (See Technical Bulletin # 003).

The automatic tensioner can be mounted in place of the previous (manual) tensioner, without any modifications or special tools.

Ford Transit with K015571XS or K015572XS: installation recommendation.

IMPORTANT:

Only install belt and tensioner when engine is at **room temperature**.

Only rotate engine CLOCKWISE !!!

1. Bring the engine to TDC (Top Dead Centre).
2. Lock the flywheel (13 mm pin), the camshaft and the injection pump.
3. Slacken bolts of the injection pump pulley.
4. Remove the belt and the tensioner.
5. Install the new (automatic) tensioner with its new bolt hand tight (Allen key hole at +/- 9.00 o'clock) (Fig. 1).
6. Install the new belt.
7. Turn the tensioner clockwise (with the Allen key) until the checkmark is positioned just above the lower edge of cut-out part (Fig 2).
8. Lock the tensioner bolt (40-45 Nm).
9. Lock the injection pump pulley bolts (25 Nm).
10. Remove the locking pins.
11. Rotate the engine 2 revolutions **clockwise**, check if the tensioner mark is still just above lower edge of the cut-out part (Fig 2). In case the position is not OK restart this procedure from the beginning.



BULLETIN

GATES REFERENCE:

5571XS & Kits, 5572XS & Kits.

MAKE:

FORD
LDV
METROCAB

MODEL:

Convoy, Metrocab, Tourneo, Transit.

MOTOR:

2.5D, 2.5TD.

MOTOR CODE:

4BA, 4BC, 4CA, 4CC, 4DA, 4EA, 4EB,
4EC, 4ED, 4FA, 4FB, 4FD, 4GA, 4GC,
4GD, 4GE, 4HA, 4HB, 4HC, EN55, ET70,
FSE425.



TECHNICAL BULLETIN 005

11/08/2005

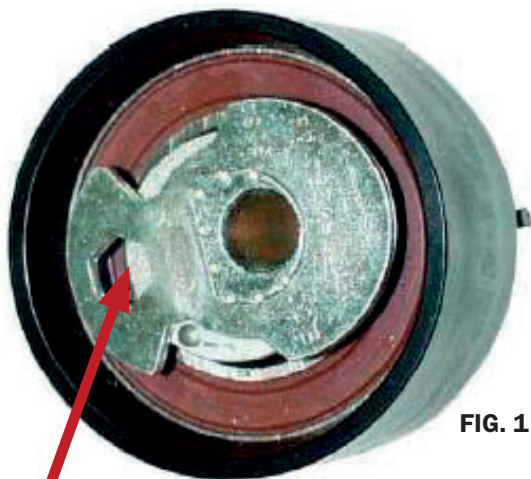


FIG. 1

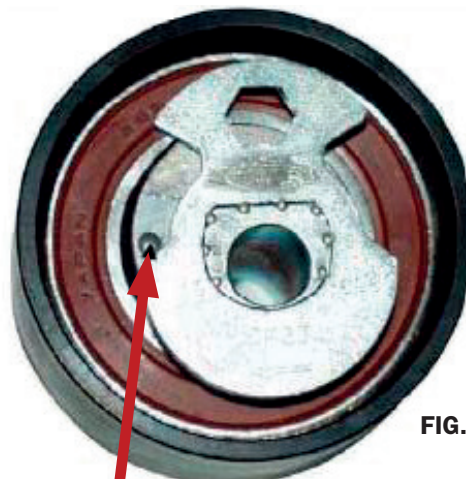


FIG. 2

Allen key hole

Checkmark

CONCLUSION:

The automatic tensioner can be mounted on all applications prescribed in our catalogue. For any automatic tensioner, the installation procedure has to be followed precisely.