



FLEXIBLE FUEL FILL HOSE

PRODUCT TYPE: FUEL SYSTEMS

RECOMMENDED FOR: Connection between the vehicle's filler neck and fuel tank. Works equally well on passenger cars and light trucks, as well as on auxiliary fuel tanks on recreational vehicles. For use with most types of fuels especially resistant to gasoline and diesel. Cuts easily with knife and wire cutters. Approved for transportation of B-7, E-5, E-10, E-15, low sulfur diesel.

RESISTANT TO: Suitable for use with gasoline, gasohol blends of ethanol, methanol and ethers (up to maximum concentrations allowed by the EPA). The hose is actually suitable for most commercial blends, especially resistant to leaded and unleaded petrol.

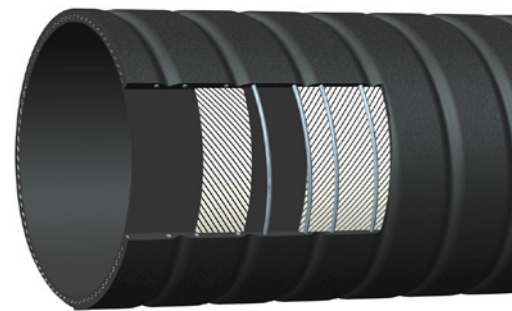
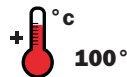
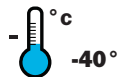
CONSTRUCTION:

- SHAPE:** Straight
- TUBE:** Nitrile (NBR)
- REINFORCEMENT:** Wire
- WIRE:** Metal Wire
- COVER:** Neoprene

STANDARDS:

- SAE NORM** SAE 30R5
- DIN NORM** -

TEMPERATURE:



	PN								
		mm	"	mm	m	mm	bar	bar	mm/HG
23924	4663-03601	38	1 1/2	45	0.91	127	1.4	6.2	758
23930	4663-03603	48	1 7/8	55	0.91	178	1.4	6.2	758
23932	4663-03604	50	2	57	0.91	178	1.4	6.2	758
23936	4663-03605	57	2 1/4	64	0.91	203	1.4	6.2	758
23940	4663-03606	63	2 1/2	70	0.91	305	1.4	6.2	758