



TECHNICAL BULLETIN 017

16/02/2007

VOLVO S40/V40 1.9 D / SYNCHRONOUS DRIVE / BELT INFO

EXPLANATION:

There are 4 different engine types of this 1.9 diesel. Most of the installation errors occur with vehicle models produced up to 12/2000. These applications have belts with the same number of teeth, the different tooth profile is not easily noticed. Knowing the exact engine code is **VERY** important in order to find the correct belt number:

- **D4192T:** 66 KW (90 HP), produced from '96 till 09/99.
This engine can be recognized by the "VOLVO" name showed on the "noise-shield", covering the engine, in "silver" letters (Fig. 1). It requires belt 5212XS (up to engine number 3534) or 5485XS (from engine number 3535). Both have 153 teeth, but these belts are **CERTAINLY NOT INTERCHANGEABLE**, as they have a different tooth profile. (see page 2 where engine number is located)
- **D4192T2:** 70 KW (95 HP), produced from 10/99 till 12/00.
On this engine, "VOLVO" is shown in black letters (Fig. 2), and it needs belt 5486XS. 5485XS and 5486XS have practically the same dimensions and the same profile, but are **CERTAINLY NOT INTERCHANGEABLE!!!** (5486XS has a more durable construction than 5485XS).
- **D4192T3** (85KW/116 HP) and **D4192T4** (75 KW/102 HP) have been produced from 12/99 till 06/04. These engines use a completely different belt with 132 teeth (5552XS). They have a black shiny line in the middle of the "noise-shield", and "VOLVO" is shown in black letters.



BULLETIN

GATES REFERENCE:

5212XS & Kits, 5485XS & Kits,
5486XS & Kits, 5552XS & Kits

MAKE:

VOLVO

MODEL:

S40, V40.

MOTOR:

1.9TD, TDI, DITD.

MOTOR CODE:

D4192T, D4192T2, D4192T3,
D4192T4.

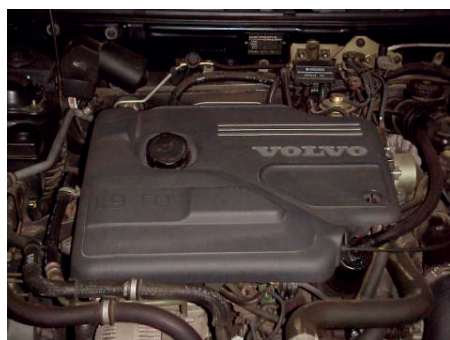


FIG. 1



FIG. 2

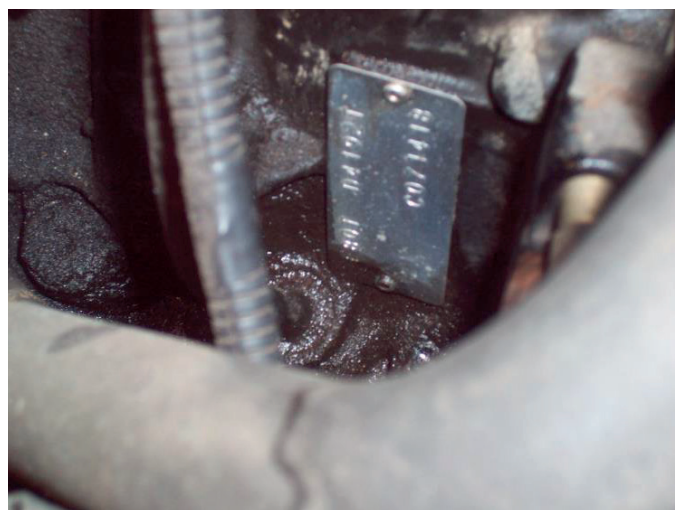
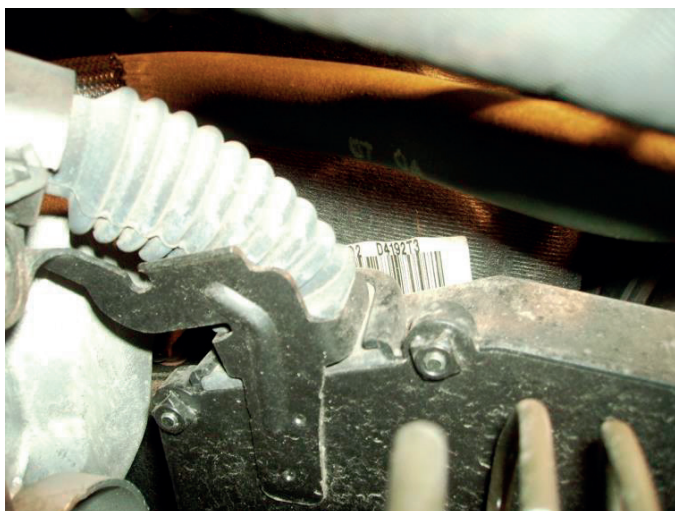


TECHNICAL BULLETIN 017

16/02/2007

The engine code and number can be found:

- A) On a small plate (to be cleaned) on the engine block, under the cylinder head, +/- 10 cm away from the gearbox.
(Fig. 3 and Fig. 4)
- B) On a sticker situated on the timing belt cover (Fig. 5)

**FIG. 3****FIG. 4****FIG. 5**



TECHNICAL BULLETIN 017

16/02/2007



The engine code is also “hidden” in the **chassis number**:

The 6th and 7th digit of the chassis number show the engine code!

70 is a D4192**T3**

71 is a D4192**T**

73 is a D4192**T2**

78 is a D4192**T4**

So chassis number *YV1VW**73**.....* means the car has a D4192**T2** engine.

Engine code

D4192**T** (up to engine number 3534)
(from engine number 3535)

D4192**T2**

D4192**T3** and **T4**

PowerGrip® belt

5212XS

5485XS

5486XS

5552XS

Always check the engine code or chassis number before making the selection.
(chassis number is only valid, if engine has not been replaced !)