



TECHNICAL BULLETIN 019

16/05/2007

RENAULT 1.9D / SYNCHRONOUS DRIVE / BELT INFO

EXPLANATION:

The selection of the correct PowerGrip® timing belt or kit for the Renault 1.9 D engine, mounted in diverse makes and models seems complicated.

Some of these applications are running a timing belt with 132 teeth (belt 5552XS), but most of the vehicles have a belt with either 151 or 153 teeth, and this is where most doubt occurs. Counting the number of teeth is not enough to find the correct belt:

For the 151 teeth applications, there are 2 options: 5305XS or 5484XS for the 153 teeth applications, there are no less than 6 different options: 5212, 5212XS, 5485, 5485XS, 5486XS, 5561XS.

These belts may have different widths, different profiles or different constructions, depending on the application.

Herewith some tips to make the correct selection:

In case the OE reference of the removed belt is still readable, the catalogue cross-reference will lead to the correct Gates replacement belt.

If the OE branding is not readable anymore, it is vital to know the **complete** engine code of the vehicle (e.g. F9Q780). This engine code can be found on the engine block, in between the oil filter and the flywheel (Fig. 1).



BULLETIN

GATES REFERENCE:

5212, 5212XS, 5305XS, 5484XS, 5485, 5485XS, 5486XS, 5561XS & their Kits.

MAKE:

ARO
DACIA
MITSUBISHI
OPEL
RENAULT
SUZUKI
VAUXHALL
VOLVO

MODEL:

Various

MOTOR:

1.9 Diesel

MOTOR CODE:

Various

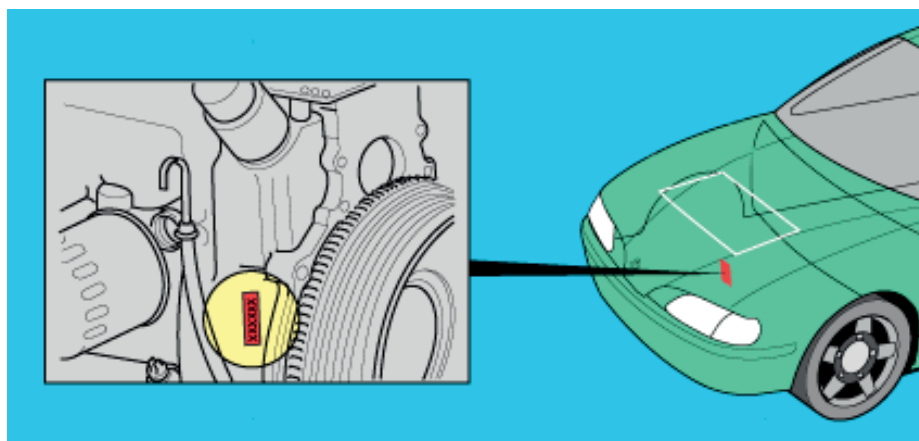


FIG. 1



TECHNICAL BULLETIN 019

16/05/2007

On some of the applications with 151 teeth, even for the same engine type, a certain vehicle could have either a 5305XS or a 5484XS.

In this case, the break point between the 2 belts is the production date of the car. As we only know the delivery date to the end-consumer, there could be doubt as to which belt one has to use. These belts look very alike and therefore some customers may think they are exactly the same. For these circumstances there is a visual difference that will allow one to make the distinction (see Fig. 2).

When you look at the 2 belts from the side, the tooth of the 5305XS goes down straight starting from the base, while the tooth of the 5484XS has a more slanting side. As a result, the tooth base of the 5484XS (Fig. 3 green line) is wider than the one from the 5305XS (Fig. 3 red line).

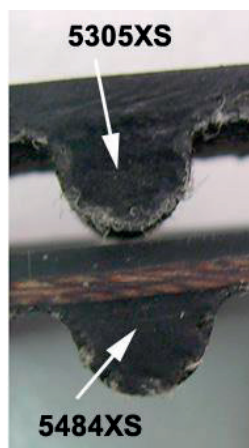


FIG. 2

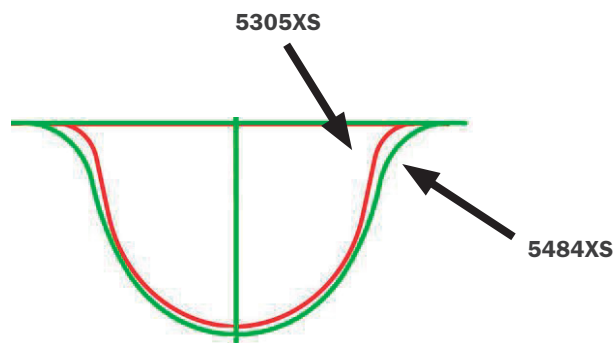


FIG. 3

We gladly refer also to Technical Bulletin # 017 on Volvo models using the 1.9 Renault diesel engines.