



TECH TIP 002

E2/TT002 v1.0
2014/01

T43090

VAG 1.0 16V AST / AVZ & 1.4 16V AFH

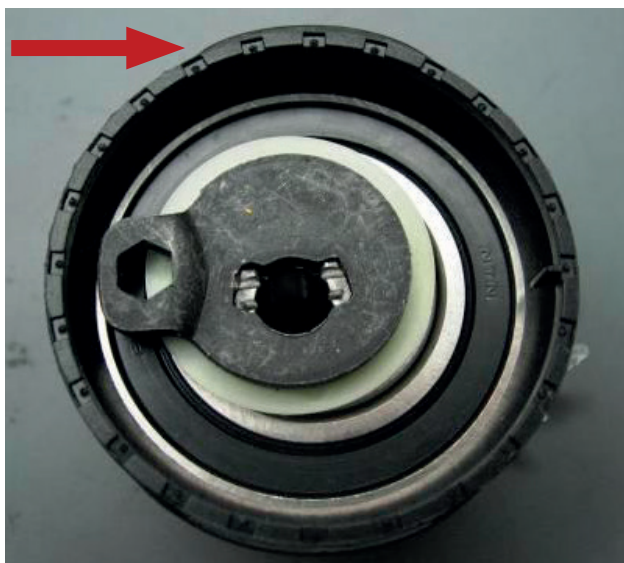


FIG. 1

The tensioner pulley has a “ridged” surface (Fig. 1 and 2).

This is intentional. These “ridges” are designed to help reduce belt noise generated by surface contact.



FIG. 2

When replacing the timing belt, ensure that a new “ridged” tensioner is installed at the same time.